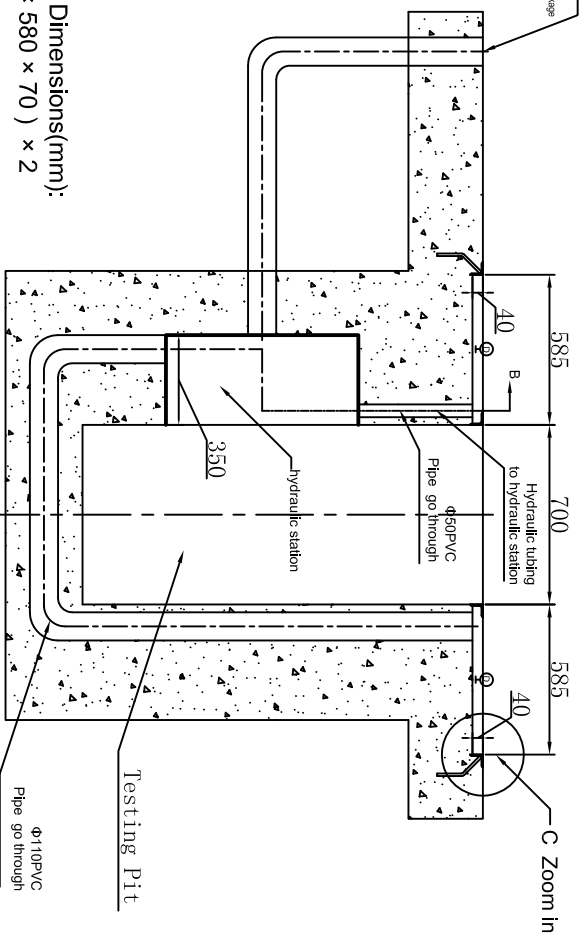
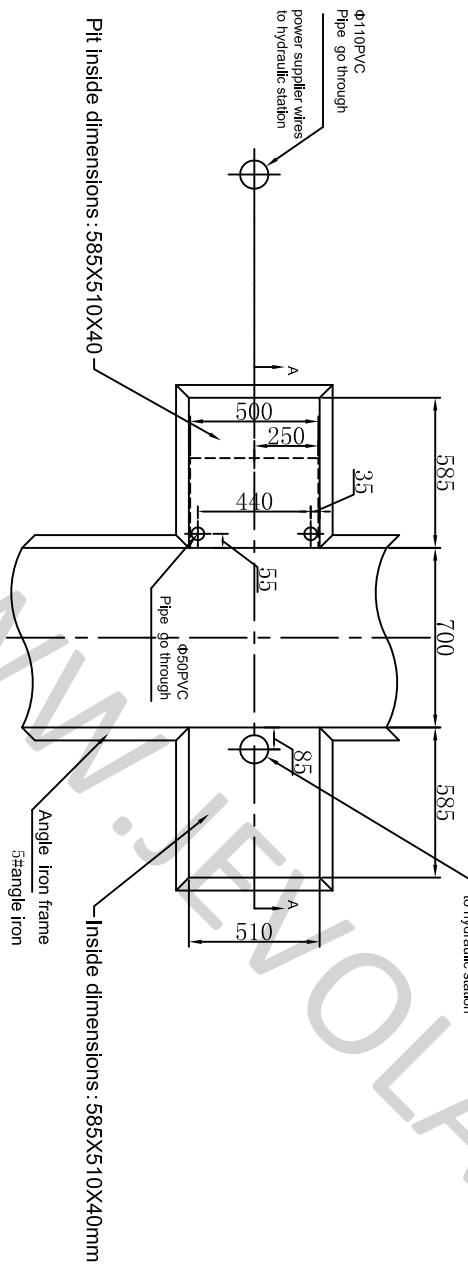


Power supply: 380V 3P 5Wires
 Frequency: 50Hz
 Power: 2kW

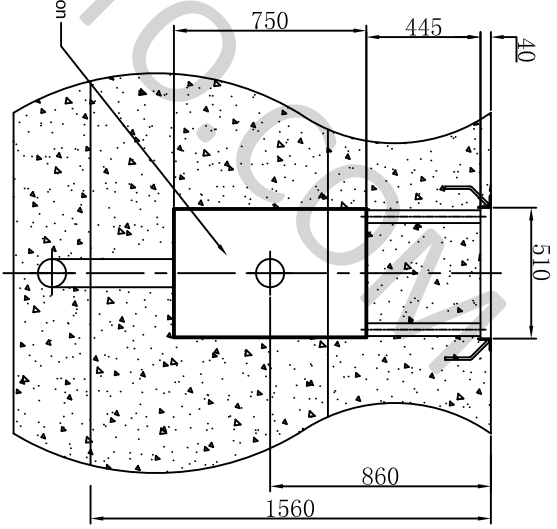
A-A



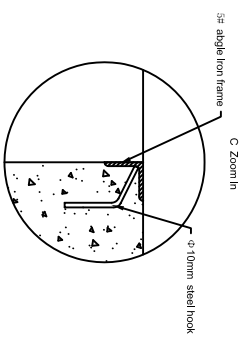
Bench Dimensions(mm):
 (580 x 580 x 70) x 2



Pit inside dimensions: 585X510X40



B-B



Tech. Instructions

1. After putting the play detector in the pit, it can be use screws to fix or concrete the gap .Note the concrete cannot press the oil pipe in case of pipe replacement in future.
2. Two of left oil pipes need 80mm movement distance.

- Construction Requirements:
1. The bottom D should be smooth and flatness error less than 2mm; diagonal line error less than 2mm;
 2. The pit load more than 3T the concrete thickness ≥ 250 mm, Intensity > 25 MPa;
 3. Considering water-proof and water-drainage;
 4. The pre-bury angle iron should be smooth and tight (after concrete the angle iron frame should be in same line with earth), the hook should be welded with angle iron then bury to concrete;
 5. The buried pipe should be clean and go through with iron wire for pulling wires to the station.

NOTES: The pit height is 40mm, the machine will not running is not this size !

Name	3t PLAY DETECTOR PIT DRAWING			Serial Number	JVG-DJ-JX03-01				
Date	2015-01-20	Department		Edition	A	B	C	D	E
Proportion	1:30	Designer							
Drawing		Inspector		Units	mm				
Company Name	Shanghai Jevol®								