



Drive-over Tire Tread Depth

Scanner Introduction



Features



Automatic scanning, non-stopping

Measure all grooves of each tire in one go

Report on tire diagnostics, risks,
maintenance suggestions

Tire life-cycle management



A close-up photograph of a car's front wheel resting on a dark blue, metallic surface, likely a vehicle lift or alignment platform. A red laser line is projected onto the tire's sidewall. The background is dark and out of focus.

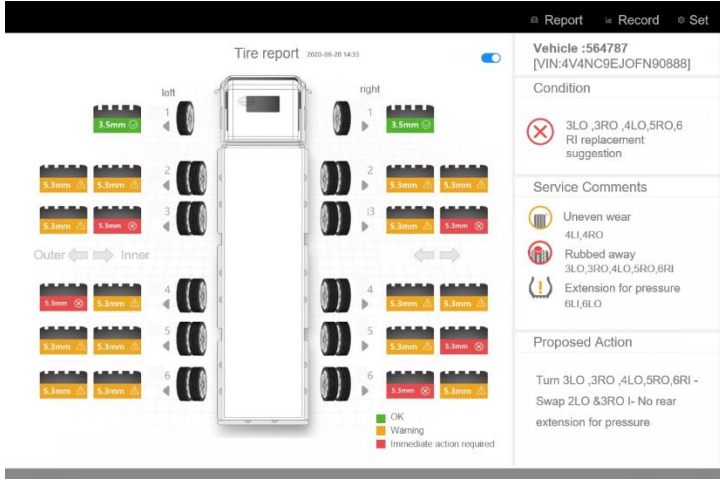
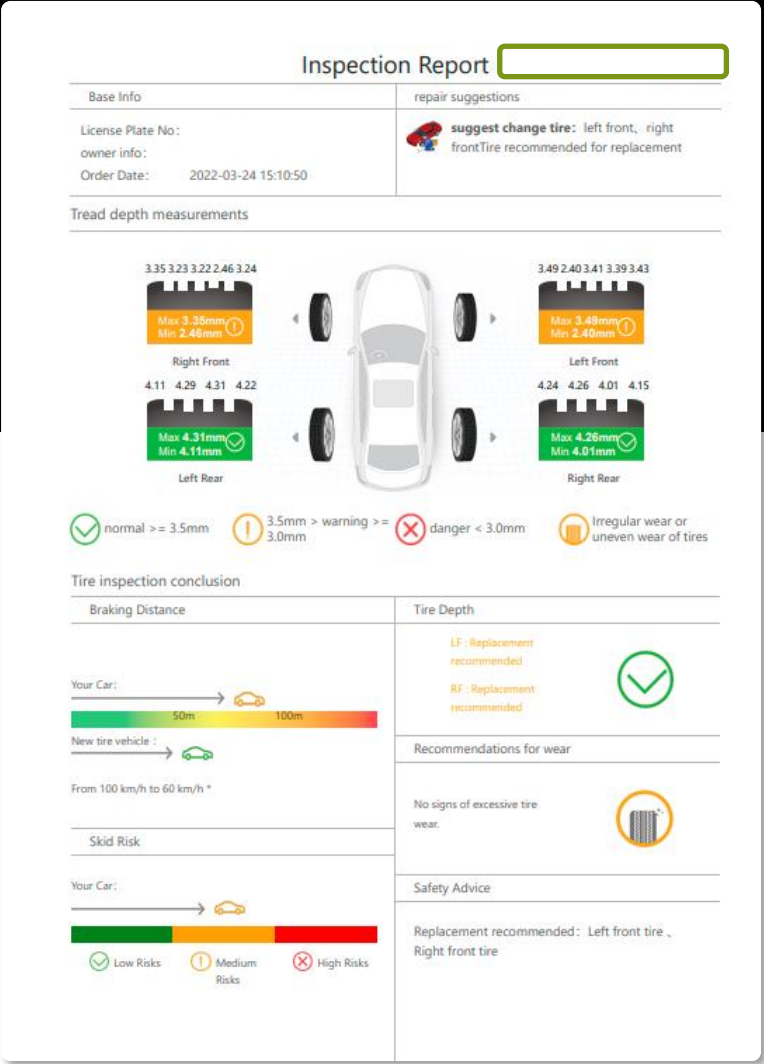
Advantages

- Scan a car in 4s
- With 0.1mm/0.3mm accuracy
- Easy to install
- Local and cloud service
- Intelligent diagnosis

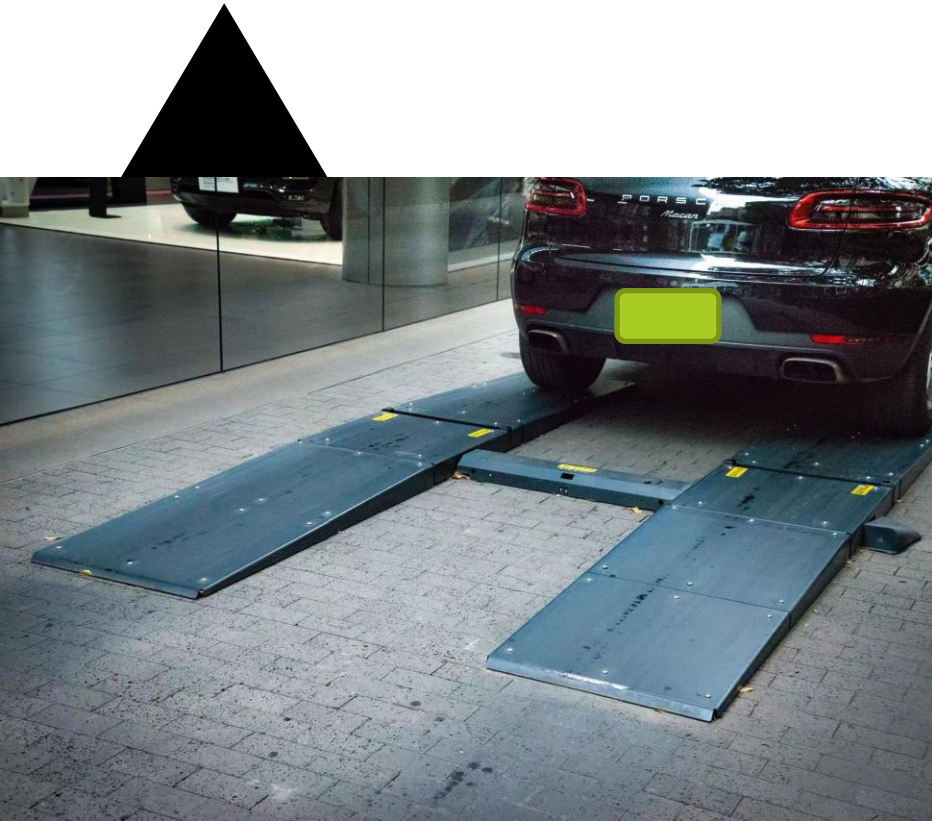
Report



- ✓ Tire wear, eccentric wear, gnawed tire alarm
- ✓ Tire replacement alert, four-wheel alignment suggestion
- ✓ Abnormal tire situation warning



Key Technology



- ▲ Linear laser scanning
- ▲ Sensor solutions and analysis algorithms, automatically identify multiple front and rear ...
- ▲ High-speed sensors and data collection allow vehicle to pass quickly

CRM



- Recording customer tire inspection data.
- Assessing tire lifespan and condition.
- Minders for maintenance, repairs, or tire replacement.

LOGO

Car tire tread

Chassis

Hand-held tire tread depth scanner

System

Admin

Home / Hand-held tire tread depth scanner / Equipment List / Inspection Log

License Plate No.:

P...

Data Filtering:

AL...

Start Date:

Start Date

End Date:

End Date

Inquire

Reset

<input type="checkbox"/>	License Plate No.	VIN No.	Car Owner's Name	Customer Mobile	Mileage(km)	Inspection Date	Data Calculation	repair suggestions	Inspection Result(mm)				Operation
<input type="checkbox"/>	--	--	--	--	0	2022-03-22 15:20	<div>Participate in Calculation</div>	<div>● Normal</div>	<div>Left Front4.72</div>	<div>Right Front4.74</div>	<div>Left Rear4.71</div>	<div>Right Rear4.72</div>	<div>Inspection Report</div> <div>Disable</div> <div>Enable</div>
<input type="checkbox"/>	--	--	--	--	0	2022-03-10 16:00	<div>Participate in Calculation</div>	<div>● Normal</div>	<div>Left Front6.11</div>	<div>Right Front6.11</div>	<div>Left Rear6.09</div>	<div>Right Rear5.97</div>	<div>Inspection Report</div> <div>Disable</div> <div>Enable</div>
<input type="checkbox"/>	--	--	--	--	0	2022-03-10 15:55	<div>Participate in Calculation</div>	<div>● Replacement recommended</div>	<div>Left Front5.99</div>	<div>Right Front2.19</div>	<div>Left Rear2.39</div>	<div>Right Rear5.95</div>	<div>Inspection Report</div> <div>Disable</div> <div>Enable</div>
<input type="checkbox"/>	--	--	--	--	0	2022-03-10 15:53	<div>Participate in Calculation</div>	<div>● Need to be replaced</div>	<div>Left Front5.96</div>	<div>Right Front2.31</div>	<div>Left Rear6.11</div>	<div>Right Rear2.34</div>	<div>Inspection Report</div> <div>Disable</div> <div>Enable</div>

System Management and integration



Manage the entire lifecycle and sales maintenance of tires through system data

APIs support for easy data integration and custom software development

LOGO

Car tire tread

Chassis

Hand-held tire tread depth scanner

System

Admin

Home / Hand-held tire tread depth scanner / Equipment List / Data calculation

Equipment:

Please select the device name

Tire:

Warning depth will be reached within two months

License Plate:

Please enter the license plate No.

Data Filtering:

All orders

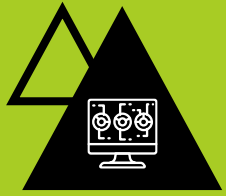
Order Date:

Start Date ~ End Date

Inquire

Reset

<input type="checkbox"/>	Merchant Name	License Plate No.	VIN No.	Car Owner's Name	Customer Mobile	Times of visits	Order Date	Inspection Result(mm)	Warning depth reached	Dangerous depth reached	Operation
<input type="checkbox"/>	<div></div>		--	--	--	6 times	2022-03-22 15:20	<div>Left F 4.7 Right 4.7 Left Rear 4.71</div> <div>Right Rear 4.72</div>	remain 4 day	remain 177 day	View
<input type="checkbox"/>								<div>Left F 4.4 Right 4.4 Left Rear 6.83</div> <div>Right Rear 6.77</div>	remain 39 day	remain 1325 day	View

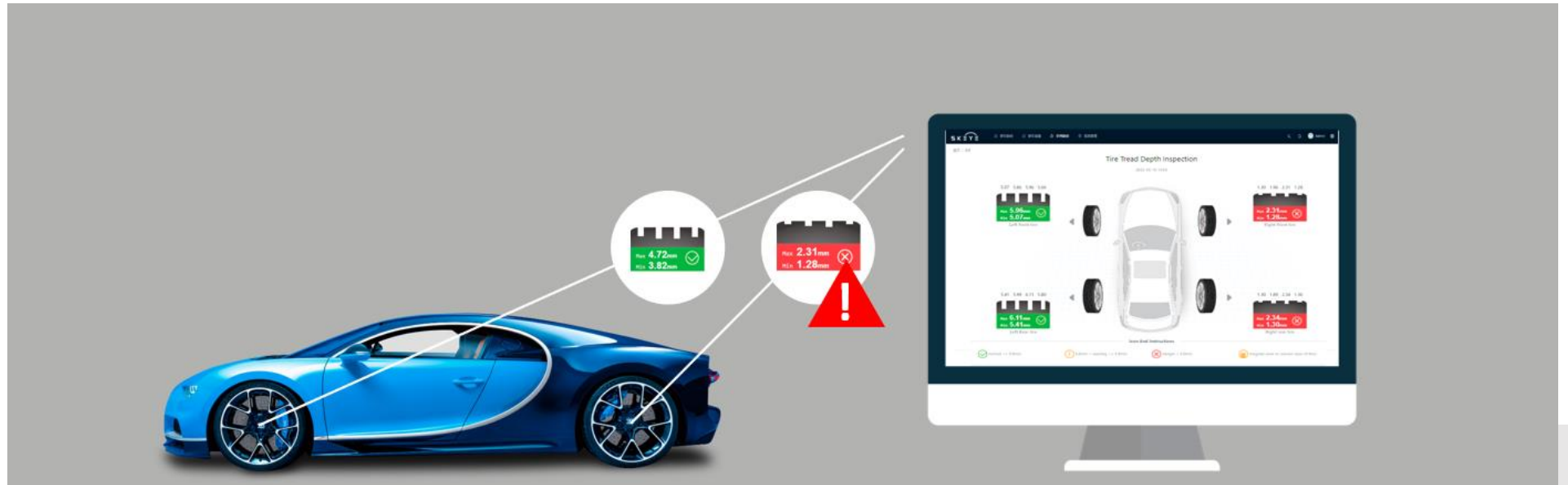
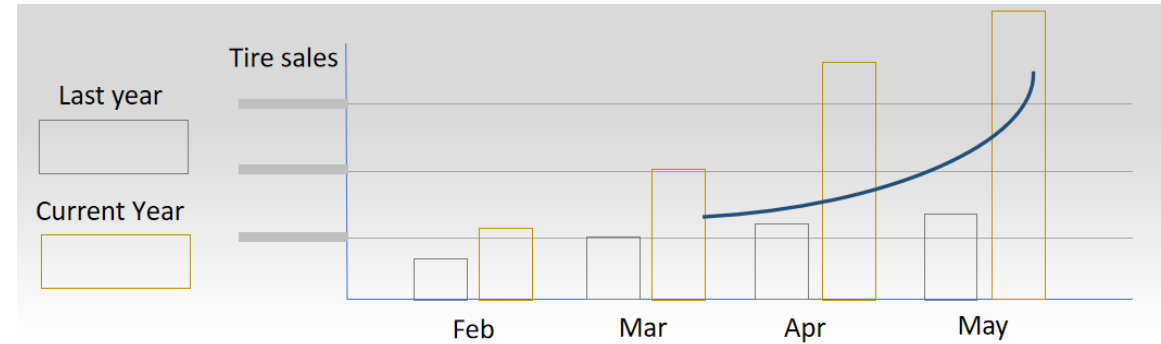


Value for car dealership



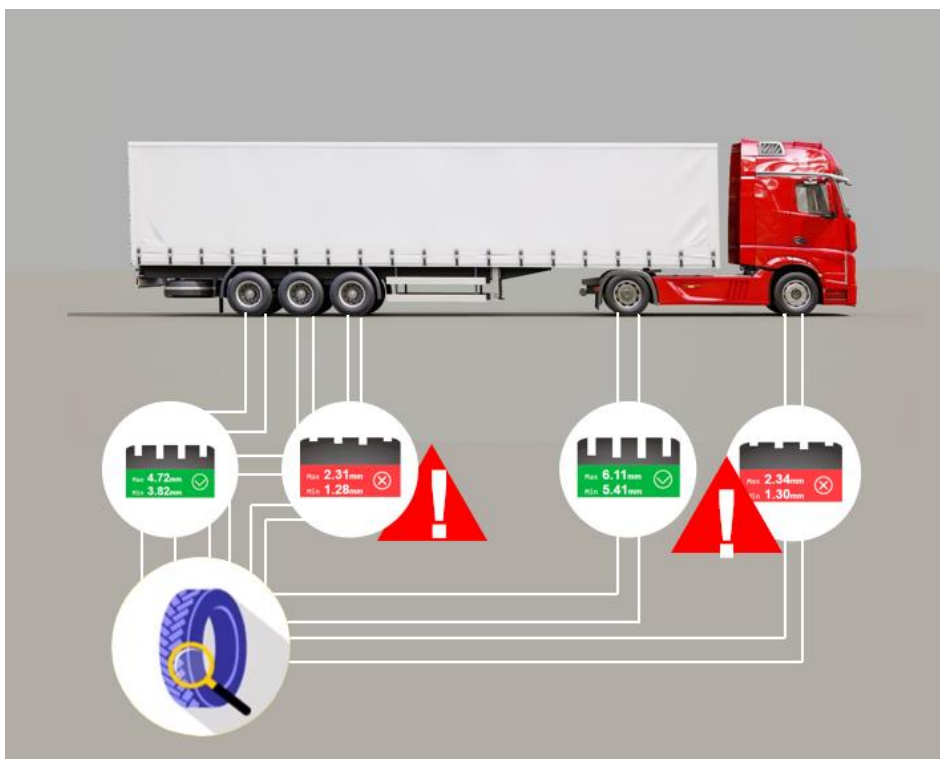
80% increase of tire sales

Suggestions for clients on tire change based on statistical data



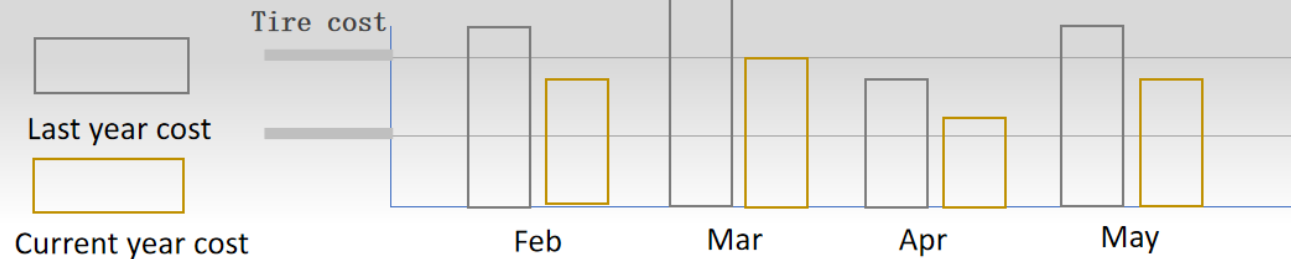


Value for fleet



Fully automated management of all tires information around the clock

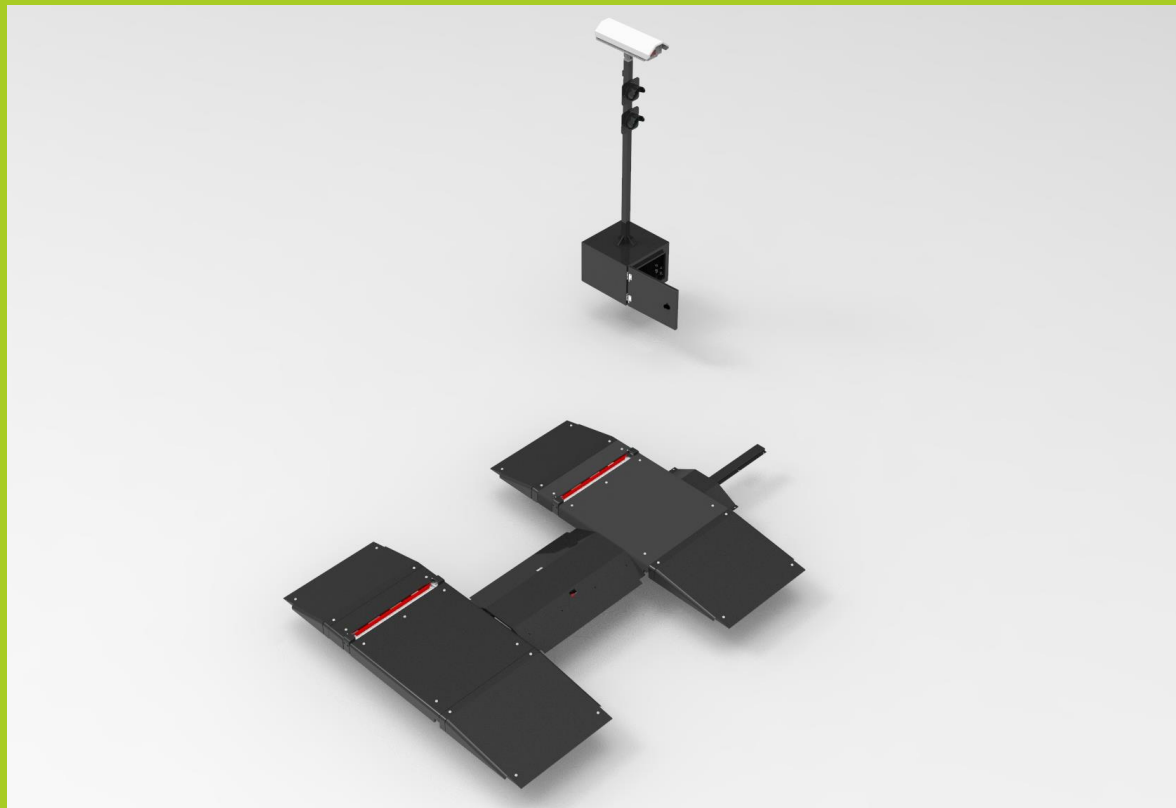
Save 30% on your existing cost



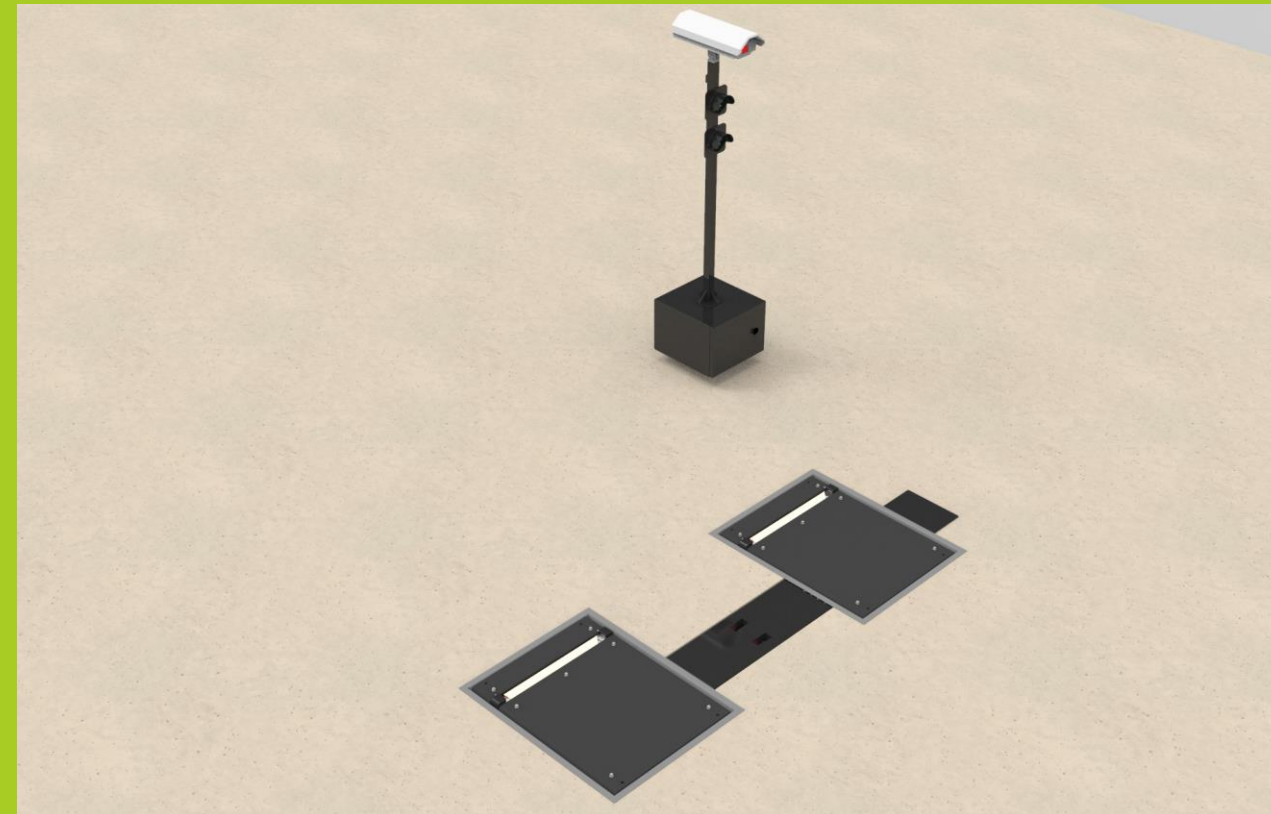
Tread Depth Scanner



▲ Floor version



▲ Inground version





Parameters

Parameters	Passenger car	Commercial vehicle
Dimension in mm (HWD)	2165*1780*90(in-ground) 2240*925*236(in-ground)	4411*2962*155(in-ground) 3030*1410*269(in-ground)
Weight	200kg	500kg
Accuracy	0.1mm	0.3mm
Tread depth	0-12mm	0-20mm
Measuring width	530mm	900mm
Measurement time	4S	7S
Network	wired & WIFI	wired & WIFI
Max. speed	10km/h	10km/h
Max. single axial load	3T	13T
Voltage supply	110-240V	110-240V
Operating temperature	-10 – 50 ° C	-10 – 50 ° C
Waterproof rating	IP67	IP67



Application Scenarios



Car Dealership



Vehicle inspection station



Car Auctions



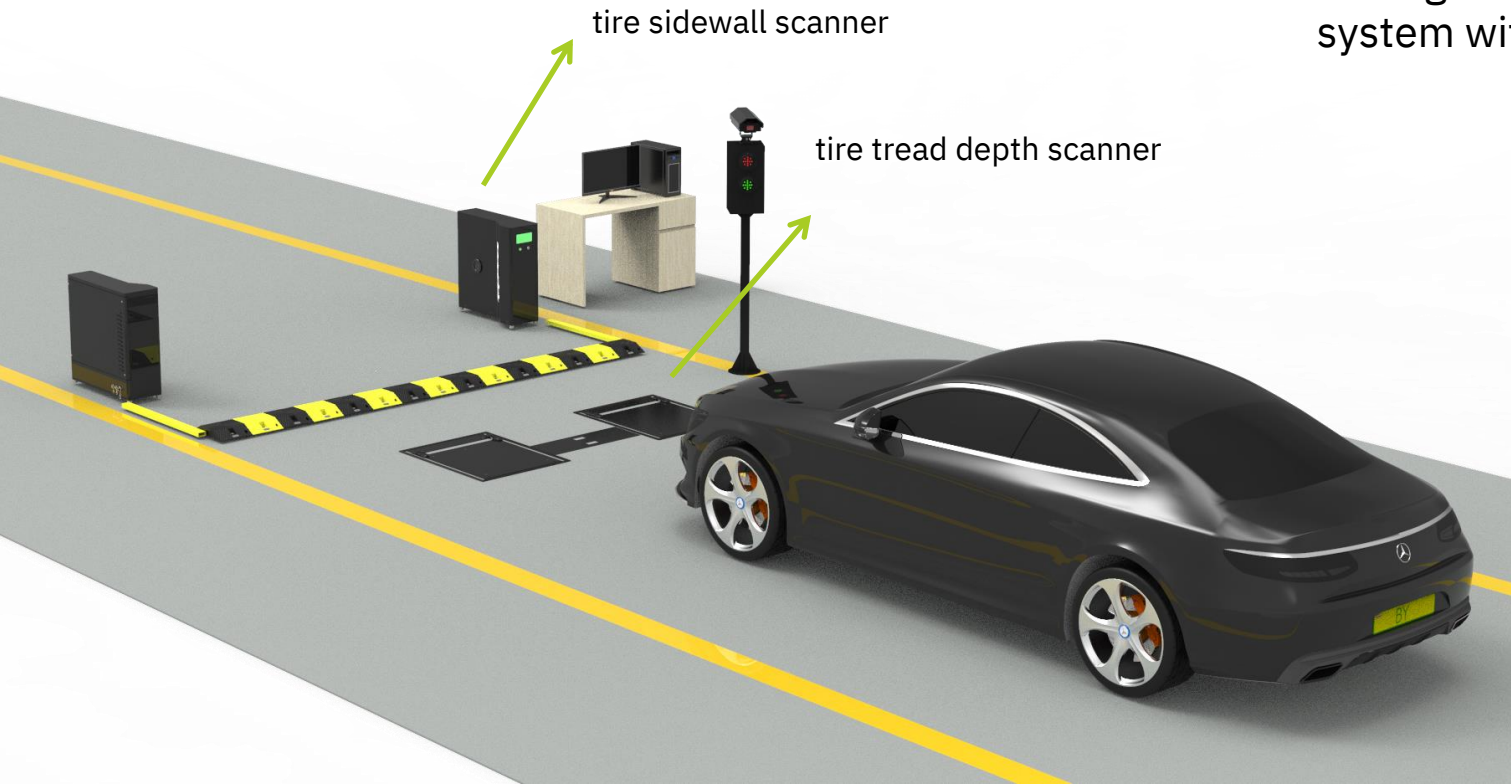
Bus group



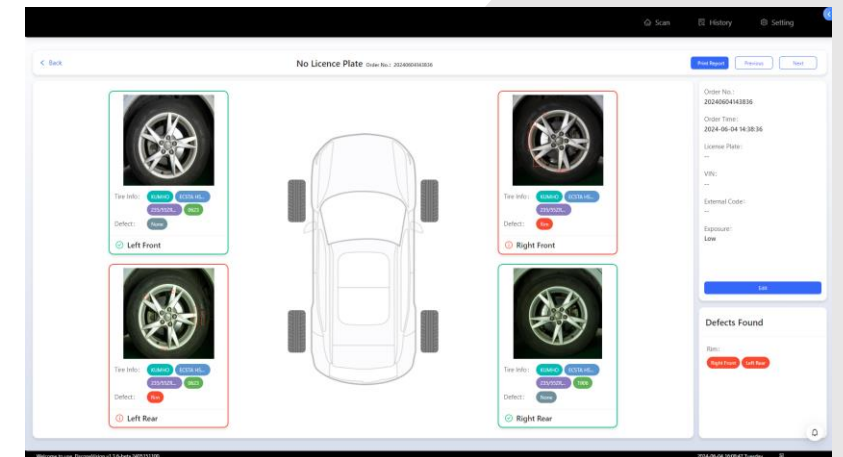
More option: intergrated tire inspection solution

Scans all tires and sidewalls in seconds

Tire and Wheel inspection that scan both the tread depth and sidewall ,including tire info,tread depth, uneven wear&wheel damage. You can find all data from the system with detailed reports.



tire sidewall report sample



Thank you